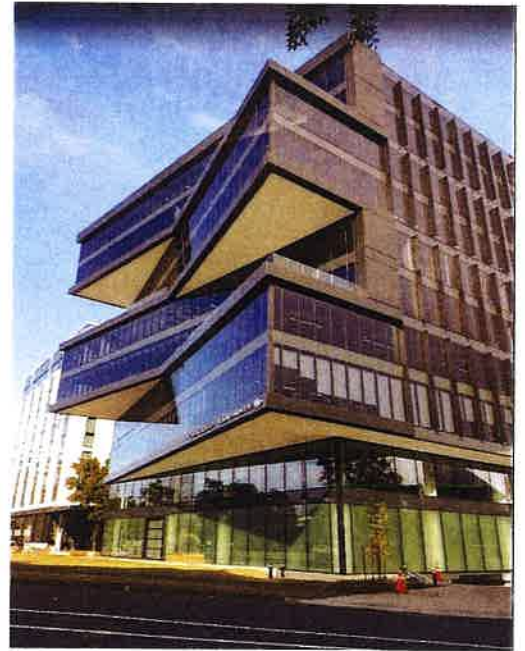


Henry Schein Mascot

[Building 3, Level 6, 189 O'Riordan St Mascot, NSW, 2020](#)

- Our new building can be found in the same precinct as the *Pullman Hotel Sydney Airport*.
- We are located on the 6th floor in the same building as *Jaguar/Land Rover showroom*.
- Entrance to the building can be found across from *South Side Deli*.
- [Click here for google map instructions on how to find us from our old office](#)



BY CAR

- There is no right turn from O'Riordan St to the Henry Schein Building if you are travelling south. The best access can be found travelling north towards the city and turning left into the Pullman Hotel.
- There is limited customer parking out the front of the building. Paid parking can be found at the Pullman Hotel across from the Henry Schein Building for \$25 a day or at [Wilson Parking](#) – 289 King St Mascot, only a 3 minute walk to the Henry Schein office.
- Alternatively, you can use Wilson Parking – 289 King St Mascot, only a 3-minute walk to the Henry Schein office. Casual rates are available and discount prices apply if you book ahead - https://www.wilsonparking.com.au/park/2297_Space_Shuttle_Airport_Car_Park_289_King_Street-Mascot

BY TRAIN OR WALKING

- We are a 6-minute walk from Mascot station, on the airport line.
- **Turn left** on Bourke St after exiting the train station and continue straight. Our office can be accessed via Bourke or O'Riordan St.

